

REAL ESTATE INDICES

Global real estate indices

	Last	Last week	Last month	YTD
GPR 250 PSI Europe	11.3	-0.3 %	-16.1 %	-44.3 %
GPR 250 PSI US	27.1	-0.8 %	-15.2 %	-33.2 %
GPR 250 PSI UK	10.5	-1.2 %	-17.7 %	-40.4 %
GPR 250 PSI Global	13.0	-1.0 %	-13.0 %	-29.6 %

Nordic real estate indices

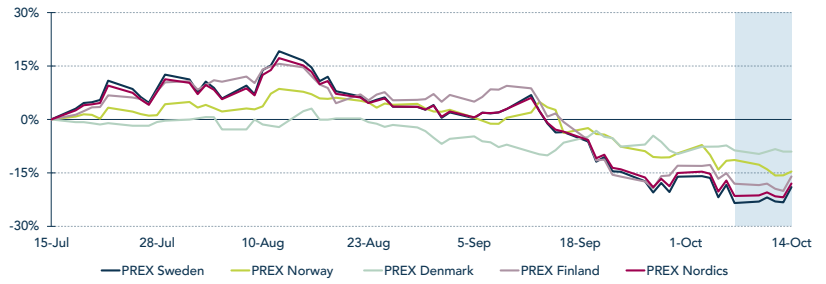
	Last	Last week	Last month	YTD
PREX Sweden	1,100.9	5.9 %	-18.1 %	-54.0 %
PREX Norway	296.8	-3.6 %	-17.4 %	-37.9 %
PREX Denmark	430.9	-0.4 %	1.2 %	-4.7 %
PREX Finland	240.6	2.5 %	-16.7 %	-35.1 %
PREX First North	462.4	1.1 %	-13.2 %	-34.2 %
PREX Office	488.2	3.6 %	-13.2 %	-42.2 %
PREX Retail	504.3	-2.1 %	-11.2 %	-24.9 %
PREX Residential	1,444.3	4.7 %	-22.6 %	-57.3 %
PREX Construction	264.2	3.2 %	-10.2 %	-40.5 %
PREX Mixed	915.8	8.3 %	-19.8 %	-62.1 %
PREX Warehouse	5,599.3	7.3 %	-19.1 %	-41.6 %
PREX Property	723.3	4.4 %	-17.2 %	-50.6 %
PREX Preference	88.5	2.2 %	-20.5 %	-35.6 %
PREX Total	474.6	4.2 %	-15.9 %	-49.2 %

For more information on Pangea Real Estate Index (PREX), please follow this link.

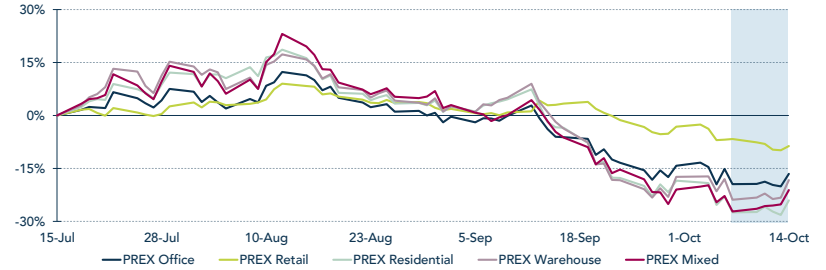
Equity market indices

	Last	Last week	Last month	YTD
OSEBX Oslo	1,113.2	-2.0 %	-8.0 %	-7.3 %
OMX Stockholm 30	1,869.0	1.5 %	-2.5 %	-22.8 %
OMX Helsinki 25	4,487.1	1.9 %	-3.3 %	-19.5 %
OMX Copenhagen 20	1,592.0	1.8 %	-4.4 %	-14.6 %
S&P 500 COMPOSITE	3,583.1	-1.6 %	-9.2 %	-24.8 %
NASDAQ COMPOSITE	10,321.4	-3.1 %	-11.9 %	-34.0 %
FTSE 100	6,858.8	-1.9 %	-5.8 %	-7.1 %

PREX Country (performance last 3m)



PREX Sector (performance last 3m)



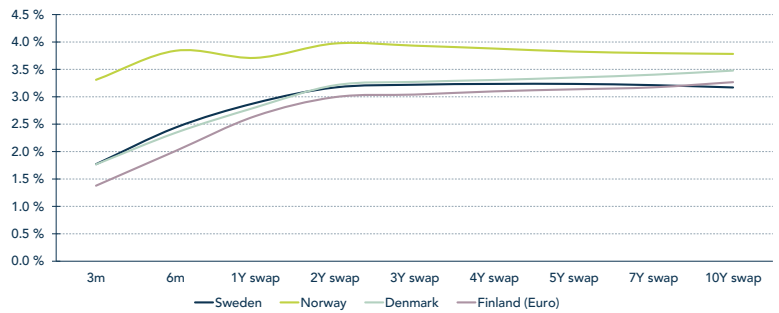
Source: Thomson Reuters/Pangea Research

MACROECONOMIC INDICATORS

Interest rates

	Norway	Sweden	Denmark	Finland (Euro)
Repo rate	2.25 %	1.75 %	0.65 %	0.75 %
1M (Nibor, Sibor, Cibor, Euribor)	2.88 %	1.65 %	1.31 %	0.85 %
3M (Nibor, Sibor, Cibor, Euribor)	3.31 %	1.77 %	1.77 %	1.38 %
6M (Nibor, Sibor, Cibor, Euribor)	3.84 %	2.44 %	2.34 %	2.01 %
1Y swap	3.71 %	2.89 %	2.81 %	2.65 %
5Y swap	3.83 %	3.24 %	3.35 %	3.14 %
10Y swap	3.78 %	3.17 %	3.48 %	3.27 %

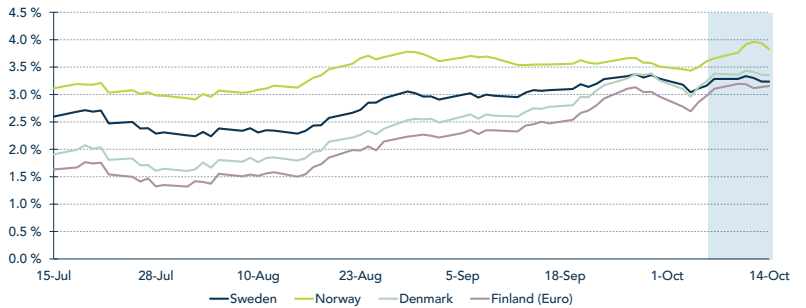
Nordic interest rate term structure



Exchange rates

	Last	Last week	Last month	YTD
USD/NOK	10.63	-0.3 %	5.0 %	20.6 %
EUR/NOK	10.33	-1.1 %	2.2 %	3.4 %
SEK/NOK	0.94	-2.5 %	-0.9 %	-3.6 %
USD/SEK	11.28	1.1 %	5.7 %	24.6 %
EUR/SEK	11.00	0.7 %	3.3 %	7.6 %
EUR/USD	0.97	-0.2 %	-2.6 %	-14.5 %

Nordic long-term interest rates - 5y swap (last 3m)



Source: Thomson Reuters

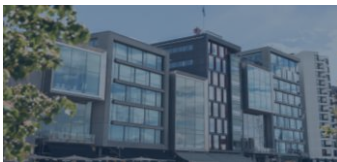
Government bonds

	Last	Last week	Last month	YTD
Norway 5Y Govt. Index	3.61 %	17bps	26bps	196bps
Sweden 5Y Govt. Index	2.38 %	-9bps	7bps	230bps
Finland 5Y Govt. Index	2.55 %	8bps	67bps	298bps
Denmark 5Y Govt. Index	2.57 %	11bps	65bps	288bps
UK 5Y Govt. Index	4.32 %	-11bps	125bps	350bps
US 5Y Govt. Index	4.27 %	13bps	65bps	302bps

Commodities

	Last	Last week	Last month	YTD
WTI Spot (US)	86.1	-3.2 %	-3.3 %	14.4 %
Crude Oil-Brent (US/BBL)	91.8	-6.3 %	-2.5 %	17.1 %
Gold (US/Troy Ounce)	1,647.2	-3.2 %	-3.4 %	-9.6 %
Aluminium (US/MT)	1,760.0	0.0 %	0.0 %	-20.0 %
Copper (Grade A US/MT)	7,652.8	1.9 %	-3.1 %	-21.4 %
Zink (US/MT)	2,980.5	-1.0 %	-8.4 %	-17.0 %

CONTACT INFORMATION



OSLO

Pangea Property Partners AS
Tjuvholmen Allé 3-5, 8th floor
N-0250 Oslo

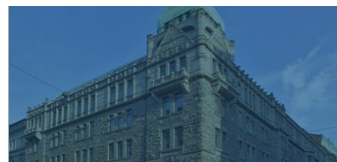
Phone: +47 21 95 80 70
www.pangeapartners.no



STOCKHOLM

Pangea Property Partners KB
Norrländsgatan 15, 7th floor
Box 7740, 103 95 Stockholm

Phone: +46 8 545 25 780
www.pangeapartners.se



FINLAND

Mrec Oy
Mikonkatu 3, 2nd floor
00100, Helsinki

Phone: +358 10 2190 570
www.mrec.fi