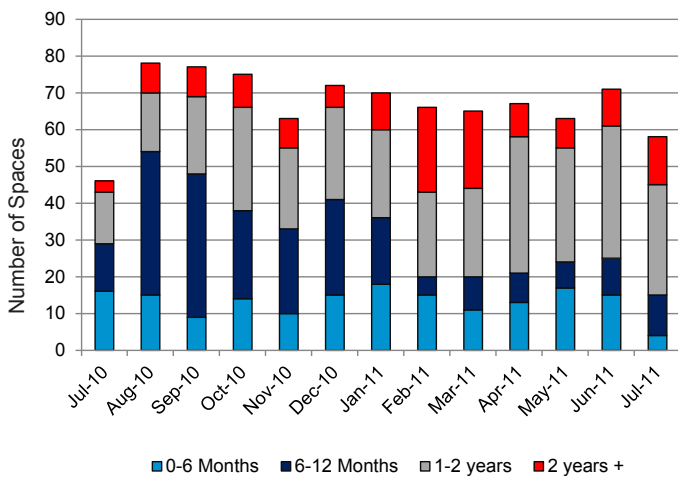
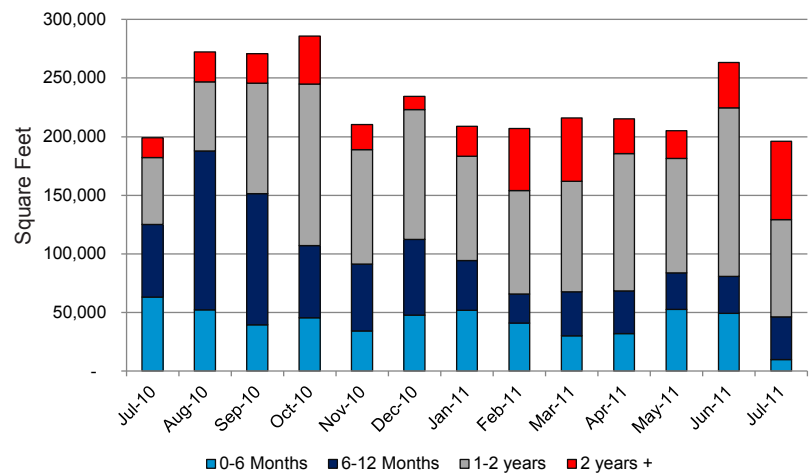


# Bellevue CBD Retail Spaces

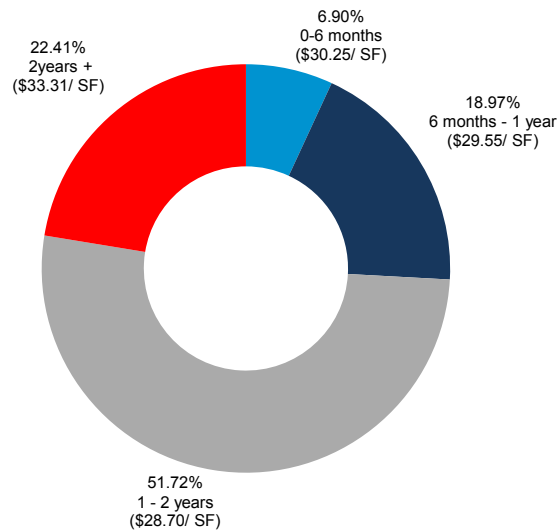
## Segmentation by Number of Spaces



## Segmentation by Square Feet Available



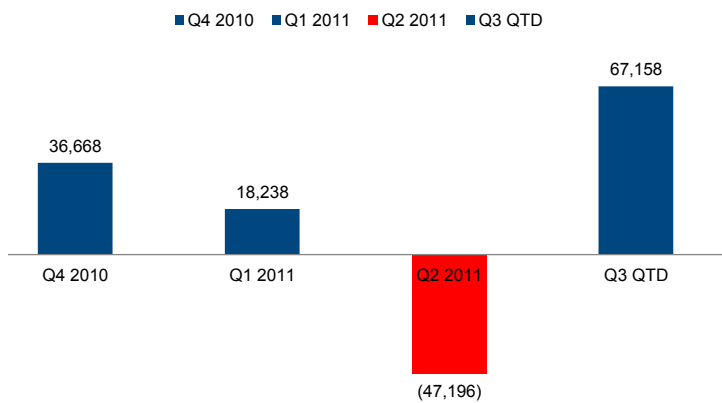
## Time on Market Chart



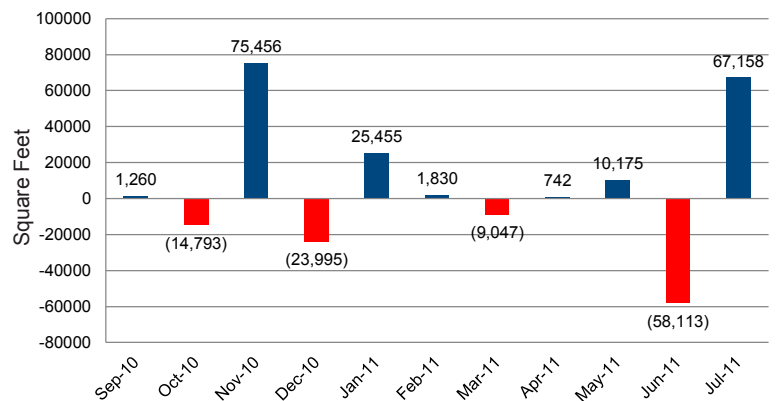
The data in this report excludes The Bellevue Collection (Bellevue Square, Lincoln Square, and Bellevue Place), and the Bravern. For more detailed information, please contact Colliers International's Bellevue Research Department. This document has been prepared by Colliers International for advertising and general information only. Colliers International makes no guarantees, representations or warranties of any kind, expressed or implied, regarding the information including, but not limited to, warranties of content, accuracy and reliability. Any interested party should undertake their own inquiries as to the accuracy of the information. Colliers International excludes unequivocally all inferred or implied terms, conditions and warranties arising out of this document and excludes all liability for loss and damages arising there from. Colliers International is a worldwide affiliation of independently owned and operated companies. This publication is the copyrighted property of Colliers International and/or its licensor(s). © 2011. All rights reserved.

# Bellevue CBD Retail Spaces

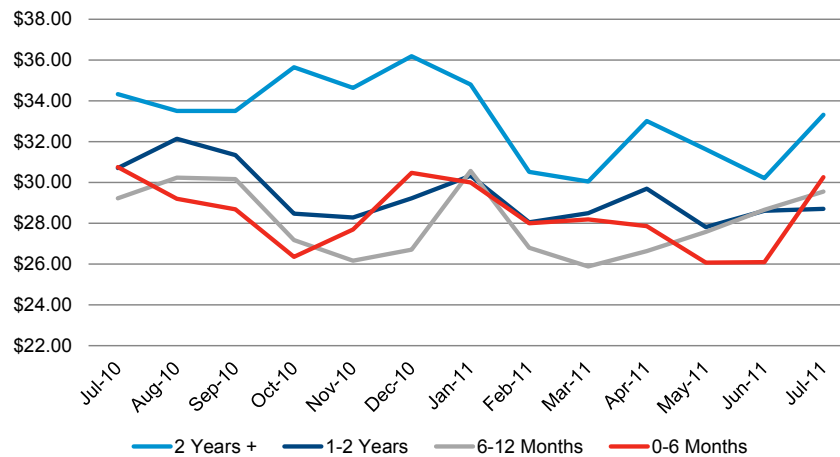
## Quarterly Absorption



## Month-Over-Month Absorption



## Average Rental Rates



The data in this report excludes The Bellevue Collection (Bellevue Square, Lincoln Square, and Bellevue Place), and the Bravern. For more detailed information, please contact Colliers International's Bellevue Research Department. This document has been prepared by Colliers International for advertising and general information only. Colliers International makes no guarantees, representations or warranties of any kind, expressed or implied, regarding the information including, but not limited to, warranties of content, accuracy and reliability. Any interested party should undertake their own inquiries as to the accuracy of the information. Colliers International excludes unequivocally all inferred or implied terms, conditions and warranties arising out of this document and excludes all liability for loss and damages arising there from. Colliers International is a worldwide affiliation of independently owned and operated companies. This publication is the copyrighted property of Colliers International and/or its licensor(s). © 2011. All rights reserved.



# Bellevue CBD Retail Spaces

## Retail Properties on the Market

Building Name	Building Address	Available SF	Rent Minimum	Days on Market
University Bookstore - Bellevue	990 NE 102nd Ave NE	965	\$24.00	62
901 Building	901-905 104th Ave NE	3,945	\$32.00	82
One Main Street	10000 Main St	3,662	\$30.00	115
Park Row Shopping Center	201 Bellevue Way NE	1,179	\$35.00	129
	4	9,751	\$30.25	97

Avalon Towers Bellevue	10349 NE 10th St	7,482	\$32.00	189
One Bellevue Center	411 108th Ave NE	1,208	\$28.00	192
345 106th Ave NE	345 106th Ave NE	3,600	\$30.00	207
Park Row Shopping Center	201 Bellevue Way NE	1,167	\$35.00	209
Park Row Shopping Center	201 Bellevue Way NE	2,092	\$35.00	209
Skyline Tower	10900 NE 4th St	3,532	\$34.00	214
Bellevue North Shopping Center	1100 Bellevue Way NE	1,861	\$35.00	215
Belle Arts	111 108th Ave NE	2,352	\$20.00	312
One Main Building	10235 Main St	3,600	\$26.00	321
City Center Plaza	555 110th Ave NE	1,026	\$25.00	329
Washington State Liquor Building - Former	10307 NE 1st St	8,562	\$25.00	342
	11	36,482	\$29.55	249

Bellevue North Shopping Center	1100 Bellevue Way NE	5,709	\$37.00	388
Metro 112	317 112th Ave NE	5,653	\$34.00	424
Bellevue North Shopping Center	1100 Bellevue Way NE	2,610	\$30.00	440
Bellevue Plaza Shopping Center	139 106th Ave NE	1,105	\$18.00	467
Elements Too	909 112th Ave NE	3,218	\$28.00	471
Bellevue North Shopping Center	1100 Bellevue Way NE	1,263	\$32.00	524
Bellevue Plaza Shopping Center	139 106th Ave NE	1,125	\$15.00	529
City Center Bellevue	500 108th Ave NE	6,758	\$26.00	558
Astoria at Maydenbauer Bay - Unit 101	10047 Main St	2,967	\$19.00	559
Courtyard Off Main	136 102nd Ave SE	1,709	\$22.00	572
Bellevue Plaza Shopping Center	139 106th Ave NE	4,902	\$25.00	703
Metro 112	317 112th Ave NE	4,105	\$40.00	704
Metro 112	317 112th Ave NE	3,166	\$38.00	704
Metro 112	317 112th Ave NE	2,401	\$33.00	704
Metro 112	317 112th Ave NE	2,783	\$33.00	704
Metro 112	317 112th Ave NE	2,783	\$33.00	704
Metro 112	317 112th Ave NE	3,094	\$30.00	704
Metro 112	317 112th Ave NE	2,033	\$30.00	704
Metro 112	317 112th Ave NE	2,487	\$30.00	704
Elements Too	909 112th Ave NE	1,113	\$28.00	722
Elements Too	909 112th Ave NE	780	\$28.00	722

The data in this report excludes The Bellevue Collection (Bellevue Square, Lincoln Square, and Bellevue Place), and the Bravern. For more detailed information, please contact Colliers International's Bellevue Research Department. This document has been prepared by Colliers International for advertising and general information only. Colliers International makes no guarantees, representations or warranties of any kind, expressed or implied, regarding the information including, but not limited to, warranties of content, accuracy and reliability. Any interested party should undertake their own inquiries as to the accuracy of the information. Colliers International excludes unequivocally all inferred or implied terms, conditions and warranties arising out of this document and excludes all liability for loss and damages arising there from. Colliers International is a worldwide affiliation of independently owned and operated companies. This publication is the copyrighted property of Colliers International and/or its licensor(s). © 2011. All rights reserved.

# Bellevue CBD Retail Spaces

## Retail Properties on the Market cont.

Building Name	Building Address	Available SF	Rent Minimum	Days on Market
Elements Too	909 112th Ave NE	2,092	\$28.00	722
Elements Too	909 112th Ave NE	2,732	\$28.00	722
Elements Too	909 112th Ave NE	2,815	\$28.00	722
Elements Too	909 112th Ave NE	1,315	\$28.00	722
989 Elements	989 112th Ave NE	3,501	\$28.00	722
989 Elements	989 112th Ave NE	4,564	\$28.00	722
989 Elements	989 112th Ave NE	718	\$28.00	722
989 Elements	989 112th Ave NE	950	\$28.00	722
989 Elements	989 112th Ave NE	2,559	\$28.00	722
	30	83,010	\$28.70	640

Symetra Financial Center	777 108th Ave NE	2,401	\$33.00	738
Symetra Financial Center	777 108th Ave NE	6,578	\$33.00	738
Main Street Marketplace	100 108th Ave NE	15,900	\$26.00	740
435 Building	435 108th Ave NE	11,745	\$20.00	741
435 Building	435 108th Ave NE	5,655	\$20.00	754
Kaylen Retail Center	821-827 Bellevue Way NE	3,000	\$60.00	868
Avalon Meydenbauer Retail	222 Bellevue Way NE	1,611	\$44.00	894
Skyline Tower	10900 NE 4th St	2,096	\$34.00	922
Ten20 Tower	1020 108th Ave NE	6,423	\$25.00	923
Symetra Financial Center	777 108th Ave NE	4,177	\$33.00	924
Ten20 Tower	1020 106th Ave NE	1,055	\$36.00	1,146
Metro 112	317 112th Ave NE	2,401	\$33.00	1,298
Belcarra	1032 106th Ave NE	3,719	\$36.00	1,256
	13	66,761	\$33.31	919