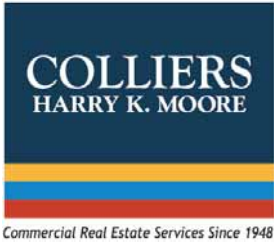


FOR LEASE | LOUISVILLE 5,991 SF Office Space

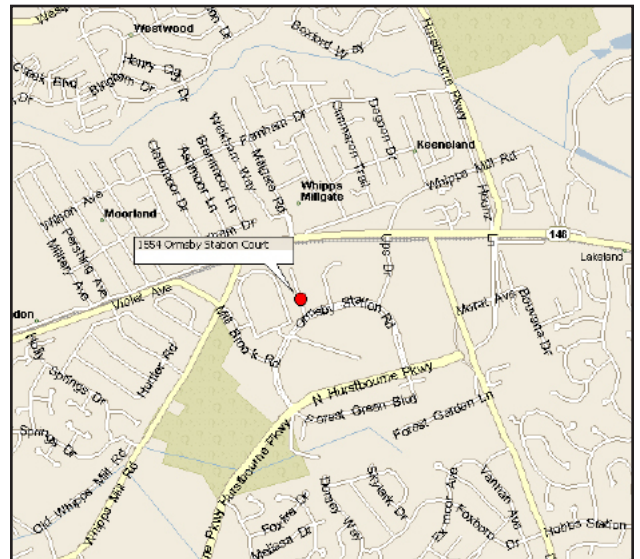


1554 Ormsby Station Court Louisville, Kentucky



FEATURES

- Located in Hurstbourne Green Business Park; No Additional Occupational Tax
- Within Walking Distance to Northeast YMCA and its Daycare Center
- Near Shopping and Restaurants
- Features of the Space:
 - 9 Ft. Ceilings
 - Adaptive to Office and Service Space with Rear Double Door Loading Area
- End Cap Space with Lots of Windows



Note: This information was obtained from sources deemed reliable, but its accuracy is not guaranteed.

AGENTS

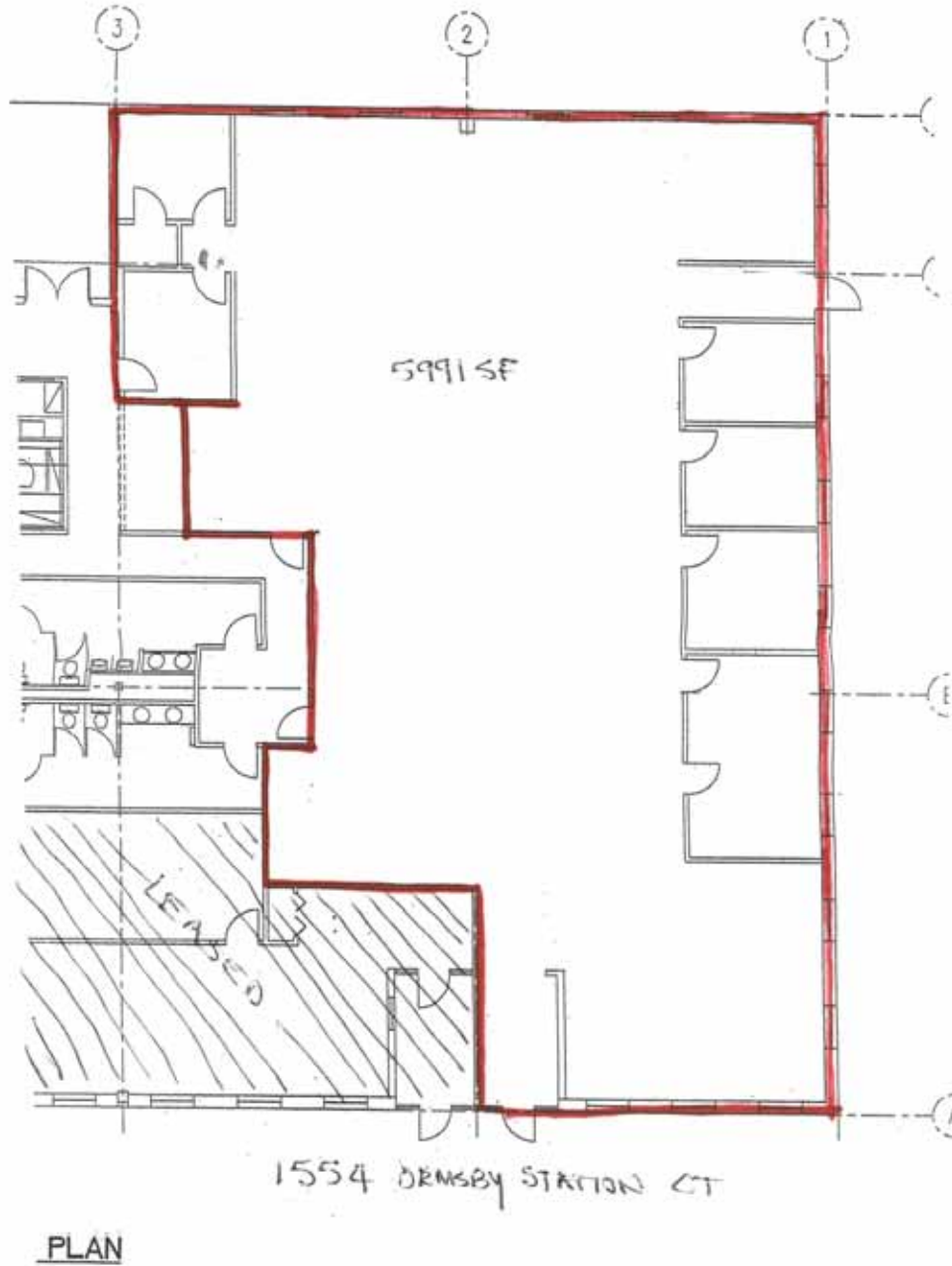
Patrick J. Richardson, CCIM
(502) 394-2515 (direct)
prichardson@colliershkm.com

D. Yandell Wood, Jr.
(502) 394-2518 (direct)
ywood@colliershkm.com



FOR LEASE | LOUISVILLE
5,991 SF Office Space

1554 Ormsby Station Court
Louisville, Kentucky



Patrick J. Richardson, CCIM

(502) 394-2515 (direct)
prichardson@colliershkm.com

D. Yandell Wood, Jr.

(502) 394-2518 (direct)
ywood@colliershkm.com

