

# GEAUGA LAKE LAND FOR SALE

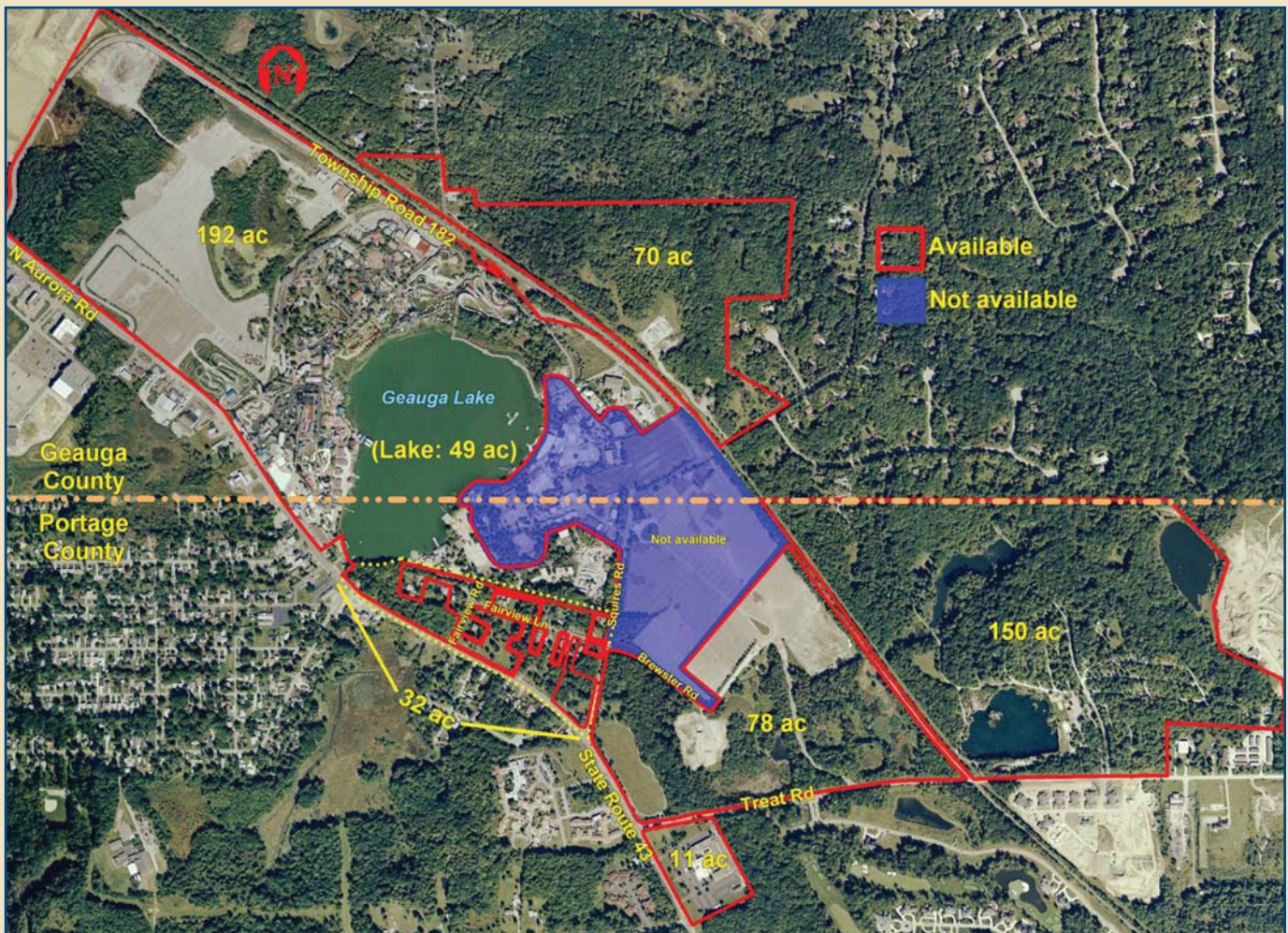
**COLLIERS**  
OSTENDORF-MORRIS



Global commercial real estate expertise

## 500+ ACRES

## PRIME DEVELOPMENT OPPORTUNITY



**Located in Both Aurora & Bainbridge, Ohio**  
**Situated in One of NE Ohio's Premier Locations**  
**Centered by a 49 Acre Lake**

**All Utilities On-Site**

**24 Miles from Downtown Cleveland**

**Sealed Bid Opportunity for Purchase or Joint Venture**

The information contained herein has been obtained from sources deemed reliable. While every reasonable effort has been made to insure its accuracy, we can not guarantee it. Readers are encouraged to consult their professional advisors prior to acting on any of the material contained in this report. Due to additional limitations in available data, some interpretation and estimates were necessary to determine boundary lines, lot acreage, and other parcel information. Parcel property lines are approximated for Portage County. The county has not developed digital parcel lines.

# 500+ ACRES

## PRIME DEVELOPMENT OPPORTUNITY



- Planning/Market and Feasibility Study performed by URS scheduled to be completed in November, 2007
- Deadline for Sealed Bid Submission is March 28, 2008
- Potentially suitable for retail, residential and/or office use

**FOR ADDITIONAL INFORMATION, PLEASE CONTACT:**

*Drawings not to scale*



Global commercial real estate expertise

**Clifford P. West, CCIM**  
*Senior Vice President & Managing  
Director of Land Development Services*  
clifford.west@colliersom.com

**Conor Coakley**  
*Assistant Vice President*  
conor.coakley@colliersom.com

1100 Superior Avenue • Suite 800  
Cleveland, Ohio 44114  
**216.861.7200 Telephone**  
**216.861.4672 Fax**  
**www.colliersom.com**



Because smart & experienced beats smart every time<sup>sm</sup>